

# 2022 BIKI DATA



## THE BIKI SYSTEM



## 2022 RIDERSHIP

TOTAL RIDES: **887,059**

**66%** OF RIDES WERE TAKEN BY HAWAII RESIDENTS

COMPARED TO 50% IN 2021



Total Riders:

**79,853**



Active Members:

**19,063**



New Members:

**13,247**

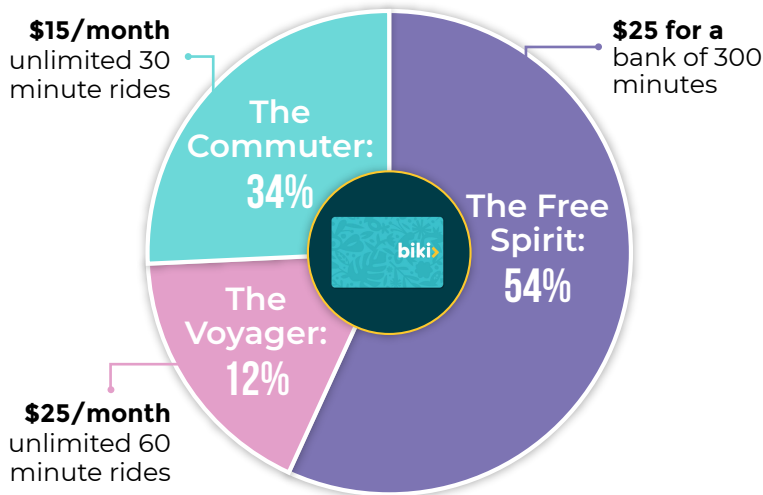


Minutes Traveled:

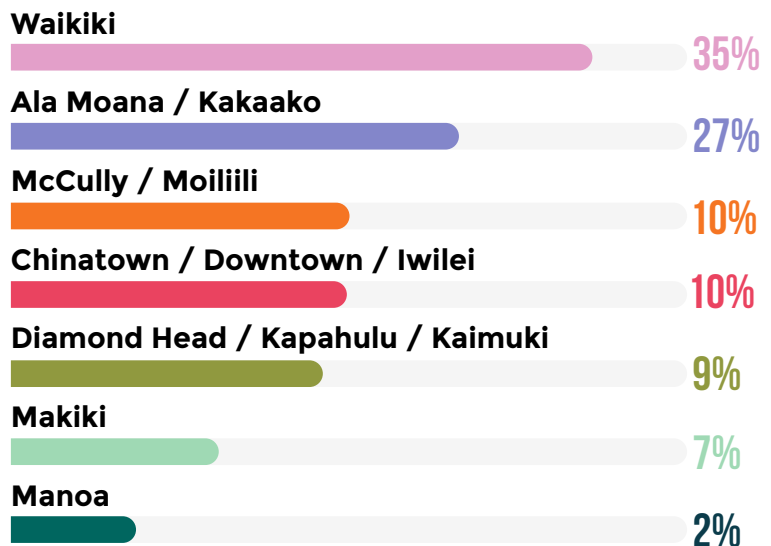
**13,938,037**



### MEMBERSHIP TYPE:



### BIKI USAGE BY NEIGHBORHOOD:

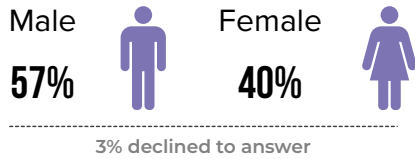


### AVERAGE TRIP TIME

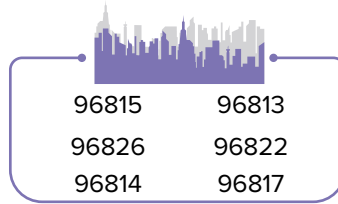
**15 MINUTES 46 SECONDS**

# MEMBER DEMOGRAPHICS

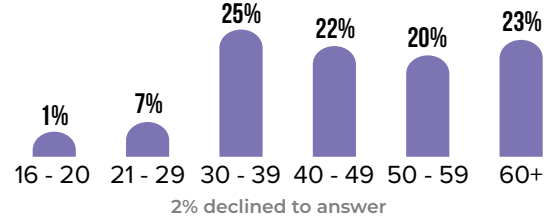
## GENDER



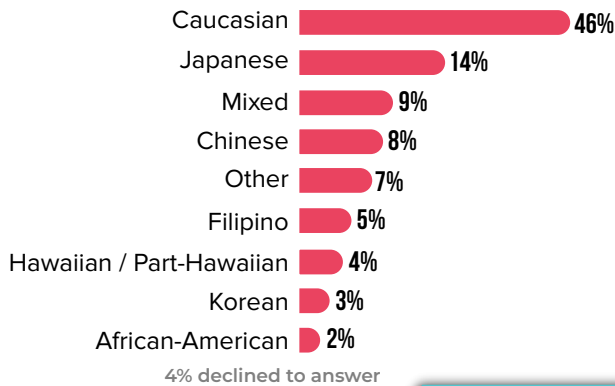
## RESIDENCE



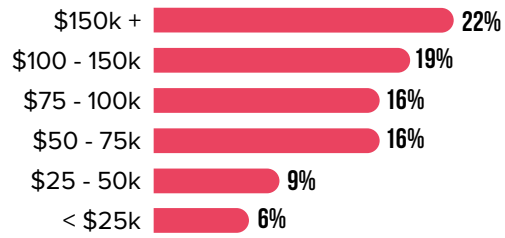
## AGE



## ETHNICITY



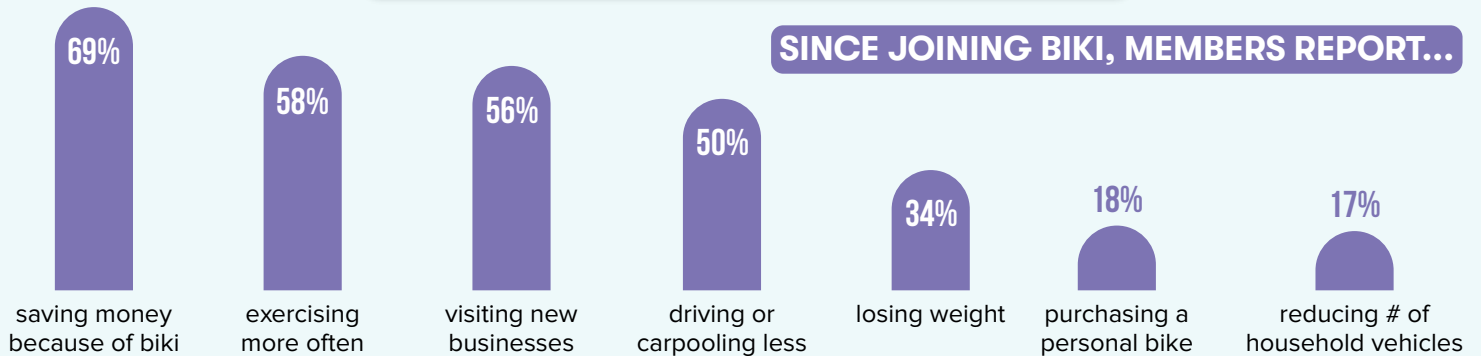
## HOUSEHOLD INCOME



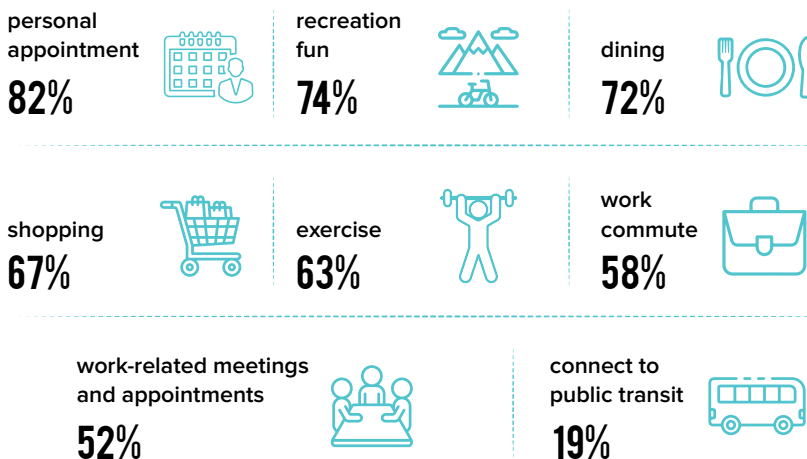
Honolulu Median Household Income: \$96,580\*

\*Source: data.census.gov

# IMPACTS AND BENEFITS



## TRIP PURPOSE



## COMMUNITY BENEFITS



Biki is brought to you by Bikeshare Hawaii, a 501(c)3 non-profit organization.